

# If I Were My Best Friend

Lightly (♩ = c. 110)

Words and Music by Jeanne Loehnis

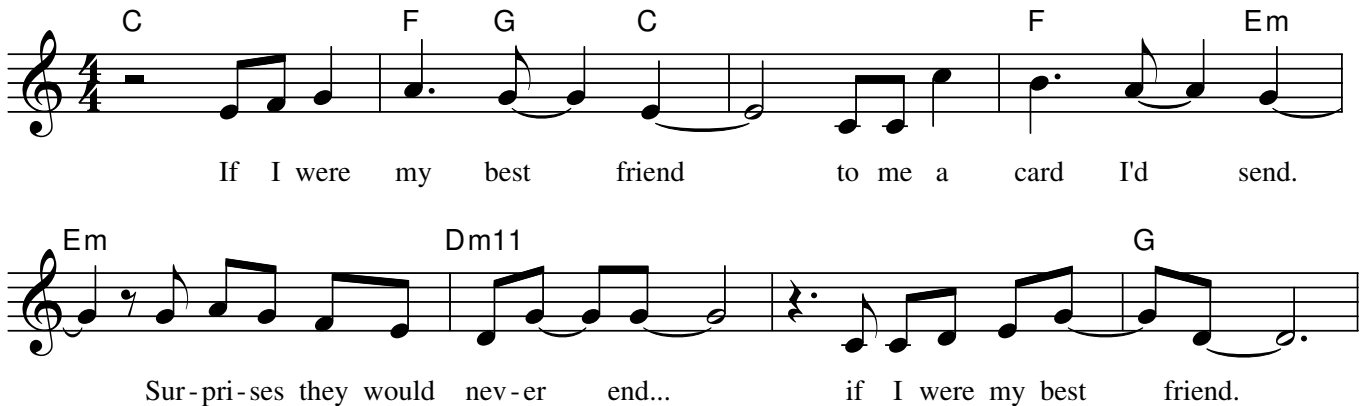
## Spoken:

My best friend thinks the world of me and sees only the best in me.  
Waits, excited, till I call. Cares so deeply, lest I fall.

My best friend often brings me gifts. And when I need it - gives a lift.  
Helps me shop for party clothes. Massages my neck, feet and toes!

But how can I begin to care for myself in ways so fair?  
'Tis others' needs to which I tend. I crash in bed at each day's end.

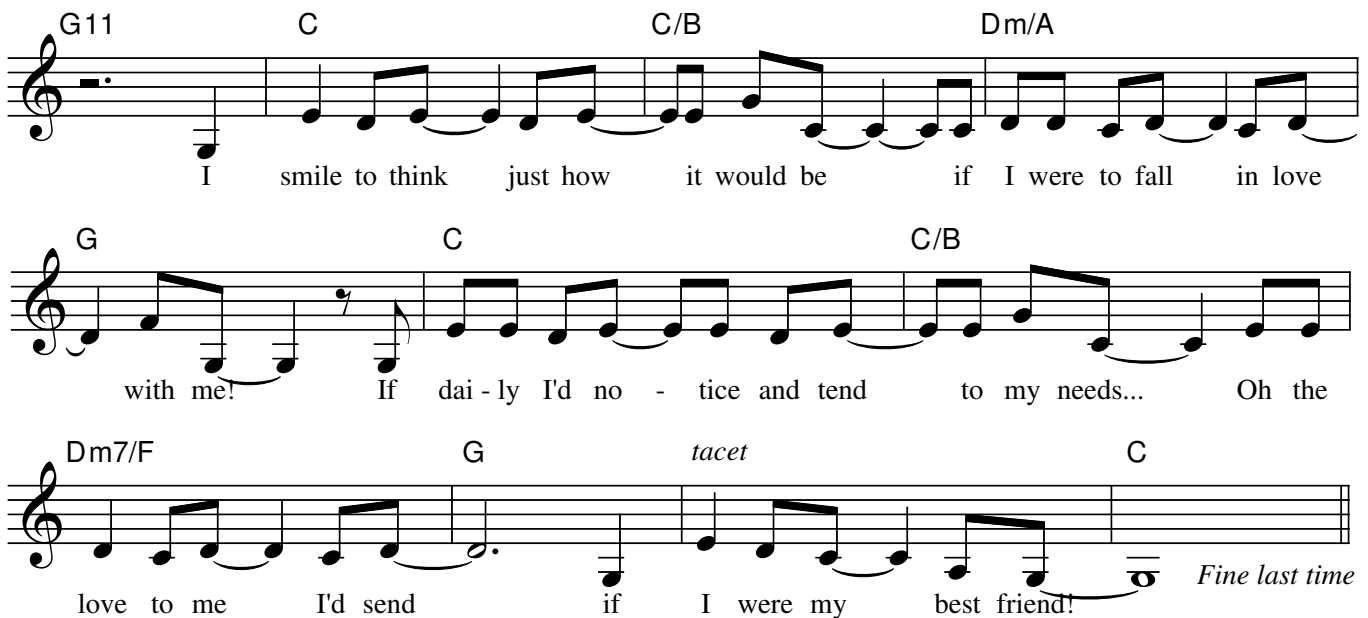
## Verse 1



Musical notation for Verse 1, 4/4 time. Chords: C, F, G, C, F, Em, Em, Dm11, G.

If I were my best friend to me a card I'd send.  
Sur-pri-ses they would nev-er end... if I were my best friend.

## Chorus



Musical notation for Chorus, 4/4 time. Chords: G11, C, C/B, Dm/A, G, C, C/B, Dm7/F, G, C.

I smile to think just how it would be if I were to fall in love  
with me! If dai-ly I'd no-tice and tend to my needs... Oh the  
love to me I'd send if I were my best friend! *Fine last time*

[www.SongsForYourSpirit.com](http://www.SongsForYourSpirit.com)

Songs For Your Spirit, LLC

Copyright 2011 Jeanne Loehnis Appleton, Wisconsin

All rights reserved

If I Were My Best Friend - page 2

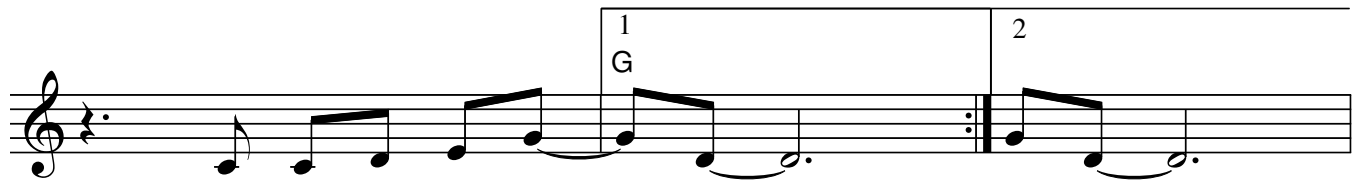
Verses 2 and 3



I would say "I love you" ev - ery day. And I'd ask, "How  
I would look in - to my eyes and see a long - ing that is



do you do?" I'd lis - ten for the an - swer  
great and deep. I'd sense a need that's bud - ding



if I were my best friend! (back to verse 3)  
if I were my best friend. (on to bridge)

Bridge



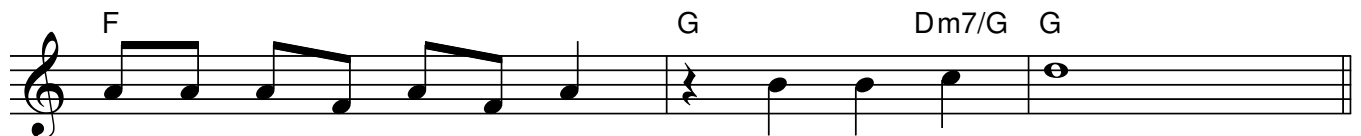
I'd buy me flow - ers for no spe - cial rea - son.



And eat large black - ber - ries that weren't in sea - son.



Stop to smell the ro - ses five min - utes at a time.



Smile at my re - flec - tion. Say, "You look quite fine!" (to chorus)